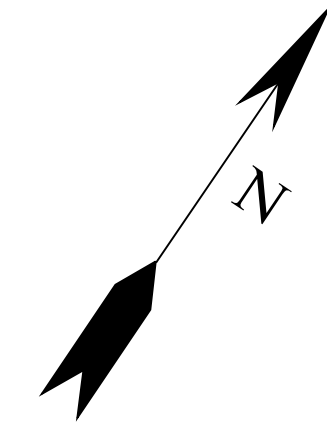
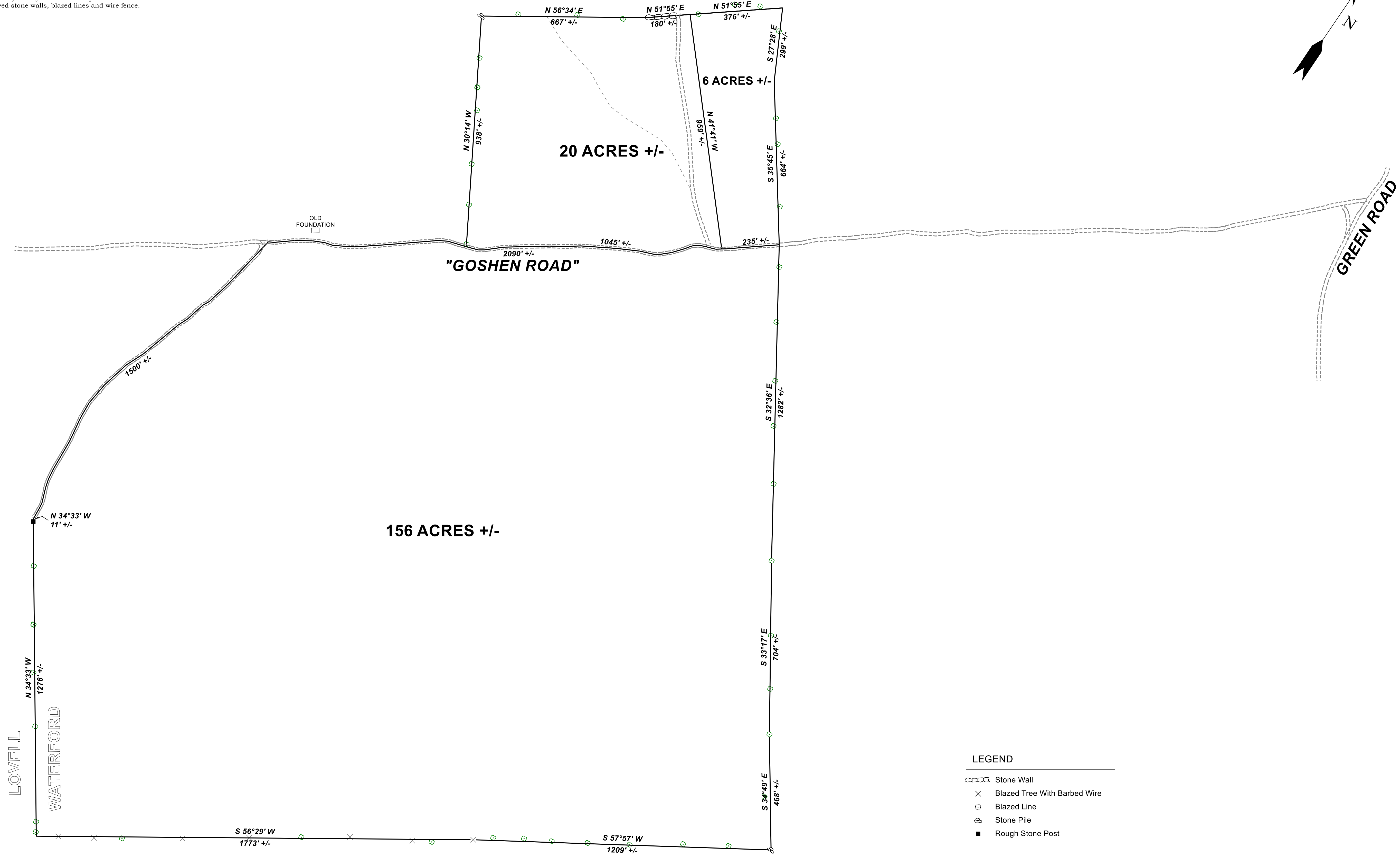


NOTES

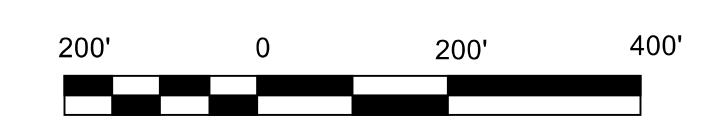
1. Bearings refer to State Plane NAD 83, Maine West (1802) Grid North.
2. This is not a boundary survey. This sketch represents the sub-meter GPS location of observed stone walls, blazed lines and wire fence.



LEGEND

- Stone Wall
- Blazed Tree With Barbed Wire
- Blazed Line
- Stone Pile
- Rough Stone Post

PRELIMINARY



REV.	BY:	DATE:	DESCRIPTION:

RIVERIDE SURVEY, LLC
 711 BOLSTERS MILLS ROAD
 HARRISON, ME 04040
 207-583-4891

GPS SKETCH FOR
LLOYD L. POLAND
 "GOSHEN ROAD"
 WATERFORD, MAINE

DATE	SCALE
2-5-2021	1" = 200'

45-2105-G