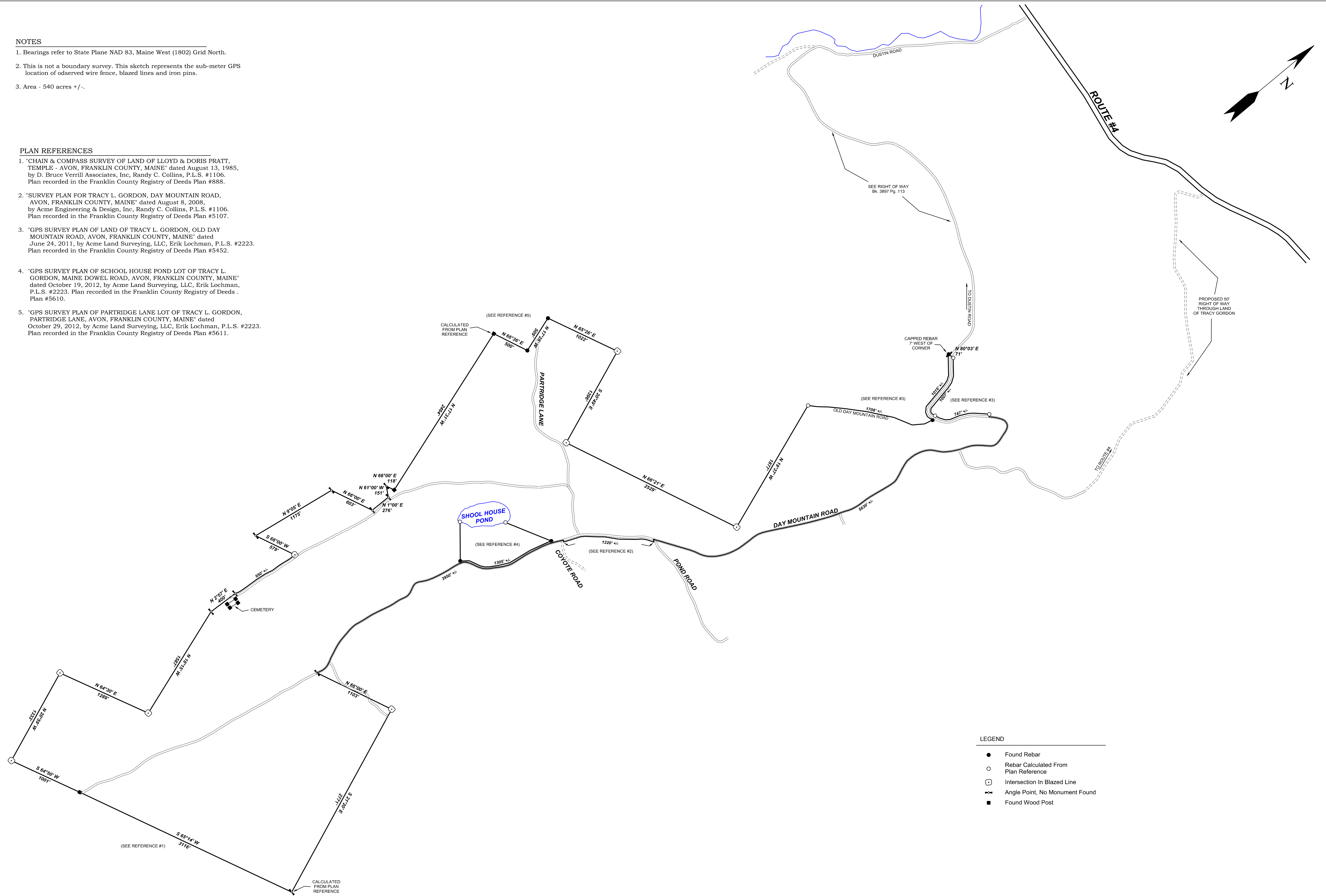


**NOTES**

- Bearings refer to State Plane NAD 83, Maine West (1802) Grid North.
- This is not a boundary survey. This sketch represents the sub-meter GPS location of observed wire fence, blazed lines and iron pins.
- Area - 540 acres +/-.

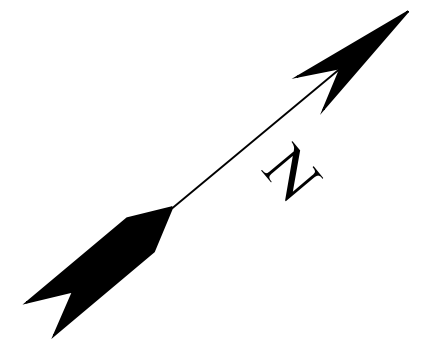
**PLAN REFERENCES**

- "CHAIN & COMPASS SURVEY OF LAND OF LLOYD & DORIS PRATT, TEMPLE - AVON, FRANKLIN COUNTY, MAINE" dated August 13, 1985, by D. Bruce Verrill Associates, Inc, Randy C. Collins, P.L.S. #1106. Plan recorded in the Franklin County Registry of Deeds Plan #888.
- "SURVEY PLAN FOR TRACY L. GORDON, DAY MOUNTAIN ROAD, AVON, FRANKLIN COUNTY, MAINE" dated August 8, 2008, by Acme Engineering & Design, Inc, Randy C. Collins, P.L.S. #1106. Plan recorded in the Franklin County Registry of Deeds Plan #5107.
- "GPS SURVEY PLAN OF LAND OF TRACY L. GORDON, OLD DAY MOUNTAIN ROAD, AVON, FRANKLIN COUNTY, MAINE" dated June 24, 2011, by Acme Land Surveying, LLC, Erik Lochman, P.L.S. #2223. Plan recorded in the Franklin County Registry of Deeds Plan #5452.
- "GPS SURVEY PLAN OF SCHOOL HOUSE POND LOT OF TRACY L. GORDON, MAINE DOWEL ROAD, AVON, FRANKLIN COUNTY, MAINE" dated October 19, 2012, by Acme Land Surveying, LLC, Erik Lochman, P.L.S. #2223. Plan recorded in the Franklin County Registry of Deeds Plan #5610.
- "GPS SURVEY PLAN OF PARTRIDGE LANE LOT OF TRACY L. GORDON, PARTRIDGE LANE, AVON, FRANKLIN COUNTY, MAINE" dated October 29, 2012, by Acme Land Surveying, LLC, Erik Lochman, P.L.S. #2223. Plan recorded in the Franklin County Registry of Deeds Plan #5611.



**LEGEND**

- Found Rebar
- Rebar Calculated From Plan Reference
- ⊕ Intersection In Blazed Line
- T Angle Point, No Monument Found
- Found Wood Post



REV.	BY:	DATE:	DESCRIPTION:

**RIVER IDE SURVEY, LLC**  
 711 BOLSTERS MILLS ROAD  
 HARRISON, ME 04040  
 207-583-4891

**GPS SKETCH FOR  
 LLOYD L. POLAND  
 LAND WEST OF DAY MOUNTAIN ROAD  
 SOUTH OF ROUTE #4  
 AVON, MAINE**

DATE	SCALE
5-30-2017	1" = 600'

**106-1704-G**